

No tambor de crioula

Caê/ C. Viátora

ijexá

Em7⁹

Em9/D

A#7/C# G/B

Em7⁹

Em9/D

A#7/C# G/B



intro- solo

Em7⁹

Em9/D

A#7/C# G/B

Em7⁹

Em7/D

A#7/C#



intro-tutti

breque!

A

Em7⁹

Em9/D

A#7/C# G/B

Em7⁹

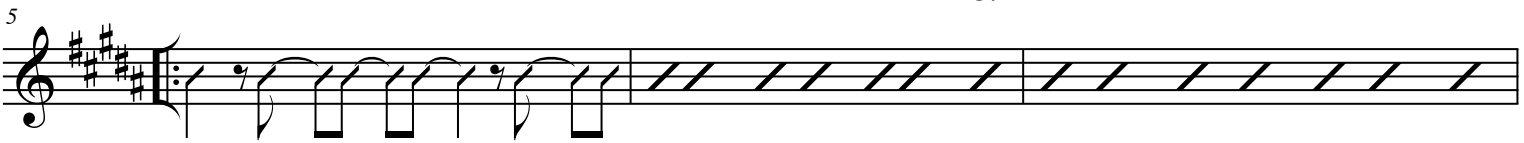
Em9/D

A#7/C# G/B

Em7⁹

Em9/D

A#7/C# G/B



Em7⁹

Em9/D

A#7/C# G/B

Em7⁹

Em9/D

A#7/C# G/B

Em7⁹

Em9/D

A#7/C# G/B



A

Em7⁹

Em9/D

A#7/C# G/B

Em7⁹

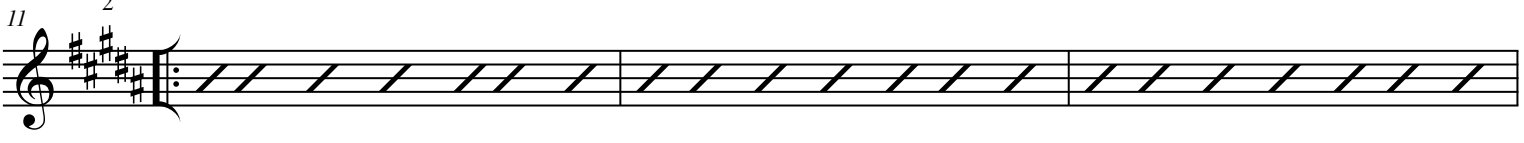
Em9/D

A#7/C# G/B

Em7⁹

Em9/D

A#7/C# G/B



Em7⁹

Em9/D

A#7/C# G/B

Em7⁹

Em9/D

A#7/C# G/B

Em7⁹

Em7/D

A#7/C# G/B



Em7⁹

Em9/D

A#7/C# G/B

Em7⁹

Em7/D

A#7/C#

Em7⁹

Em9/D

A#7/C# G/B



breque!

Em7⁹

Em9/D

A#7/C# G/B

Em7⁹

Em9/D

A#7/C# G/B

Em7⁹

Em9/D

A#7/C# G/B



1.

No tambor de crioula

2

23 $C7M^6$ A_{m7} B_{m7} E_{m7}^9 E_{m7}^9/B $C\#7M^{\#11}$ D E_{m7}^9 E_{m7}^9/B $C7M^{\#11}$ D

26 E_{m7}^9 E_{m7}^9/B $C7M^{\#11}$ D $C7M^{\#11}$ D E_{m7}^9 E_{m7}^9/B $C7M^{\#11}$ D

29 E_{m7}^9 E_{m7}^9/B $C7M^{\#11}$ D E_{m7}^9 E_{m7}^9/B $C\#7M^{\#11}$ D $C7M^{\#11}$ D

32 E_{m7}^9 $E_{m9/D}$ $A\#7/C\#$ G/B E_{m7}^9 $E_{m7/D\#}$ $A\#7/D$ G/B

34 E_{m7}^9 $E_{m9/D\#}$ $A\#7/C\#$ $G\#B$ E_{m7}^9 $E_{m7/D}$ $A\#7/C\#$

crescendo *Refrão* *pp* *solto* *breque!*

Ao S/B casa2 e Coda

39 E_{m7}^9 $E_{m9/D}$ $A\#7/C\#$ G/B E_{m7}^9 $E_{m7/D}$ $A\#7/C\#$ G/B E_{m7}^9 $E_{m9/D}$ $A\#7/C\#$ G/B

42 E_{m7}^9 $E_{m9/D}$ $A\#7/C\#$ $G\#B$ E_{m7}^9 $E_{m7/D\#}$ $A\#7/C\#$ E_{m7}^9

groove-final *FIM!* *f* *ff* *breque!*